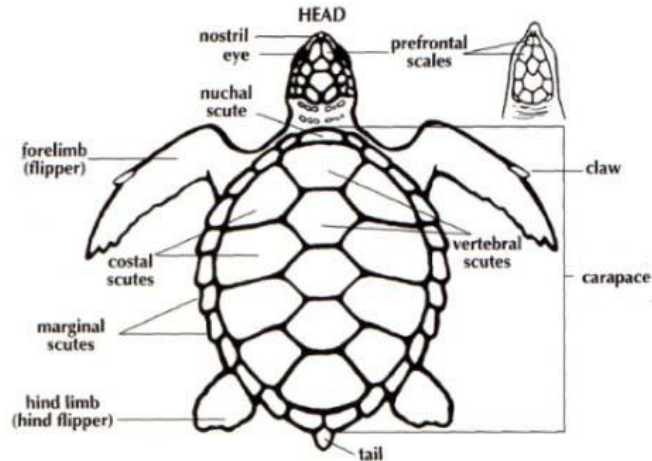


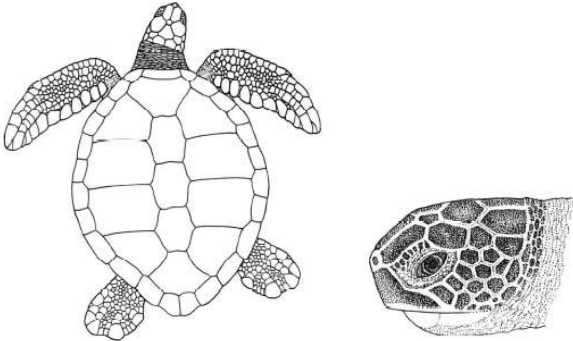
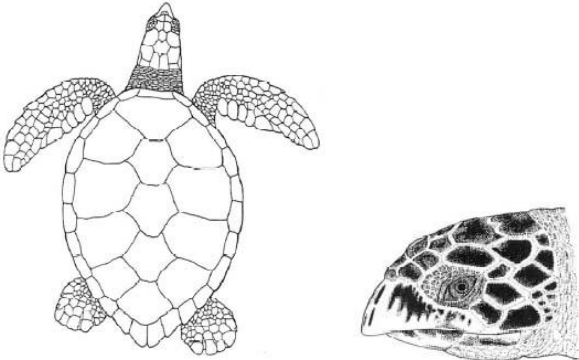
Florida Sea Turtles

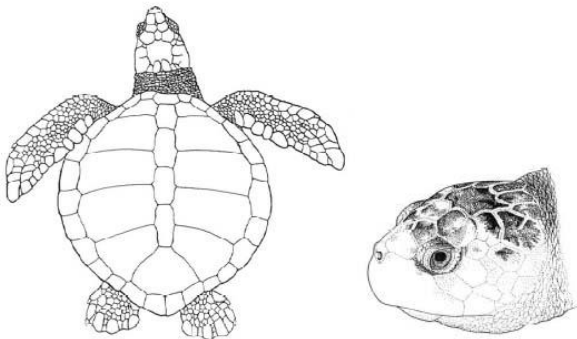
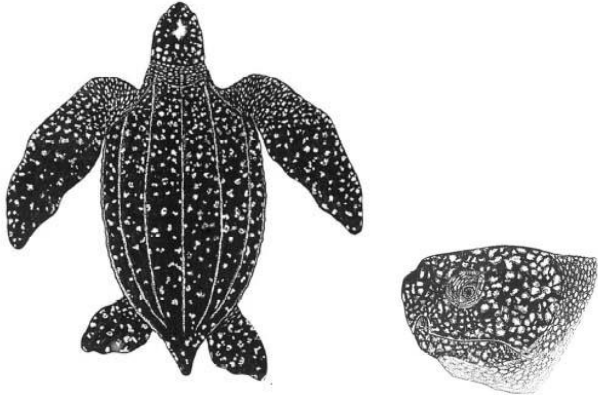
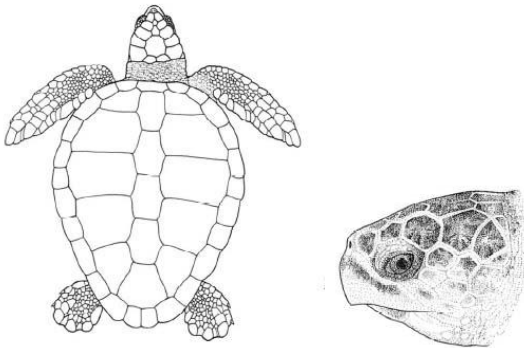
Dichotomous Key

Directions: Using the following descriptions, create a dichotomous key that will allow you to correctly identify the 5 sea turtles which can be found off Florida's coast.

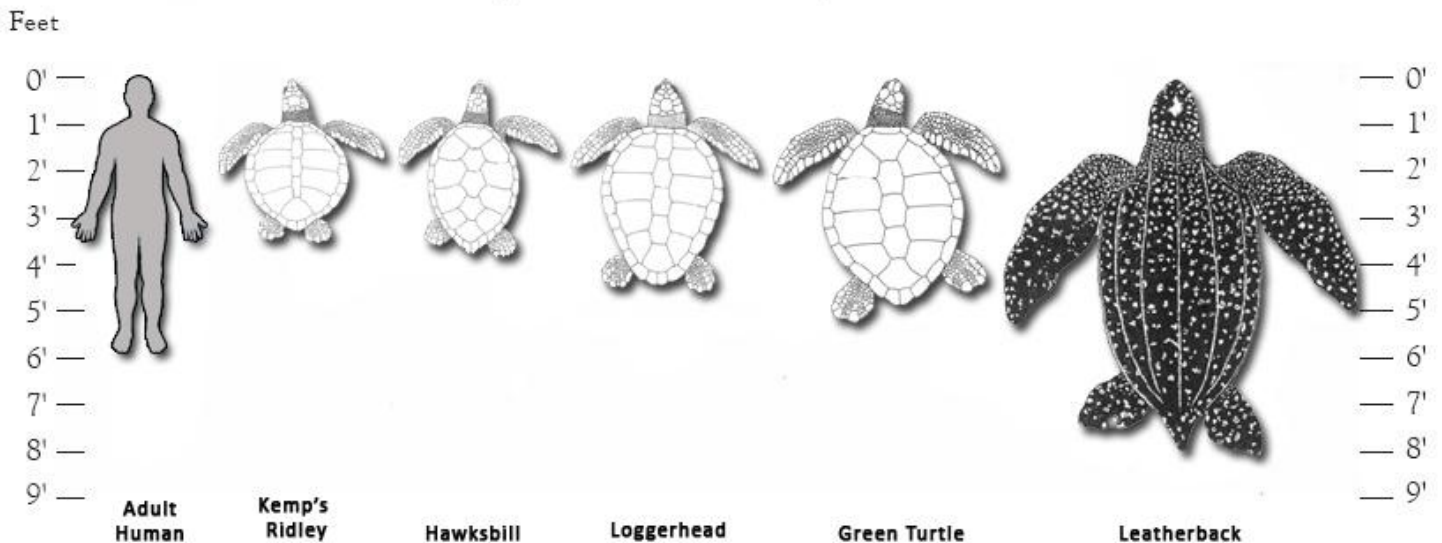
Dorsal View



Sea Turtle	Picture	Description
Green		<u>Coloration</u> : Radiating streaks, brown, buff <u>Carapace</u> : 4 costal scutes <u>Length</u> : 120cm <u>Head</u> : round face, serrated jaw, 1 pair elongated prefrontal scales
Hawksbill		<u>Coloration</u> : amber and brown streaks <u>Carapace</u> : 4 costal scutes, overlapping and oval <u>Length</u> : 90-110+cm <u>Head</u> : curved beak, distinct overbite, 2 pair of prefrontal scales

Kemp's Ridley		<p><u>Coloration</u>: gray to light olive green</p> <p><u>Carapace</u>: round, 5-6 costal scutes</p> <p><u>Length</u>: 70cm</p> <p><u>Head</u>: triangular, relatively large, 2 pair of prefrontal scales</p>
Leatherback		<p><u>Coloration</u>: dark gray/black with white spots</p> <p><u>Carapace</u>: tapered, leathery with 5 ridges</p> <p><u>Length</u>: 165-190+cm</p> <p><u>Head</u>: tooth-like notch on either side of upper jaw, no scales</p>
Loggerhead		<p><u>Coloration</u>: reddish brown/brown</p> <p><u>Carapace</u>: longer than wide, 5 or more costal scutes, first pair very small</p> <p><u>Length</u>: 90-110+cm</p> <p><u>Head</u>: large head, 4 or more prefrontal scales</p>

Florida Species Size Comparison Chart



Florida Sea Turtles Dichotomous Key

Description	Identification
1a.	a.
b.	b.
2a.	a.
b.	b.
3a.	a.
b.	b.
4a.	a.
b.	b.

Dichotomous Key Flow Chart

Draw a flow chart, based on your dichotomous key, that will help you identify the 5 species of sea turtles found in Florida waters.

Questions

1. **Define** dorsal: _____

Define scute: _____

2. In your own words, **describe** how a scientist uses a dichotomist key.

3. Which sea turtle **characteristic** was most *valuable* to you when distinguishing between the different sea turtles? **Explain** why was this characteristic is useful for identification?

4. Which of these sea turtles has evolved the **most unique** characteristics? **Describe** the *difference* between the characteristics of this sea turtle and the others.

5. If you were snorkeling over a reef, **explain** how you would know if you were swimming next to a *Kemp's Ridley* or *Loggerhead* sea turtle?

6. **Discuss** how size might affect a sea turtle's *diet, reproduction, population size* and *conservation efforts*.

